



Drainage

**“QUALITY BY
DESIGN”**



"QUALITY BY
DESIGN"

STANDARD WARRANTY

CORPORATE OFFICES AND FACTORY
PO BOX 2097
533 EAST THIRD STREET
BEAUMONT, CA 92223
(951)845-3161
FAX(951)845-7644

DURA PLASTIC PRODUCTS, Inc. ("Sellers") warrants to the original Buyer only, that all products shall be free from defects in design and manufacture for a period of one year from the date of delivery, provided that such products are installed, used and/or adjusted only in strict accordance with the appropriate guidelines.

**FOR USE IN NON-VEHICULAR TRAFFIC AREAS.
WEIGHTS AND DIMENSIONS MAY VARY.**

MODIFICATION OF PRODUCT VOIDS WARRANTY. In no event shall the foregoing warranty extend to any products in any way caused or allowed to be, or installed, operated or used in such a manner as to be, subject or exposed to conditions of misuse, abuse or accident. The sole obligation of Seller, and the exclusive remedy of Buyer under this warranty, under any other warranty, expressed or implied, under any rule of law including strict liability, negligence, indemnity, or otherwise, is the replacement of the defective goods by Seller, or at Seller's sole election, the return of the purchase price of the defective goods.

Any products returned by Buyer to Seller under the foregoing terms shall be returned to Seller's place of business freight prepaid, accompanied or preceded by Buyer's particularized statement of the claimed defect. The risk of loss and freight charges to and from Seller in connection with any returned products shall be borne by Buyer, but Seller shall bear such additional freight charges arising in connection with any such returned products ultimately determined by the Seller to be defective under the terms of the foregoing warranty.

The agreement of Seller to sell its products is expressly conditioned upon the Buyer's assent to, and Seller agrees to sell its products upon, all terms and conditions set forth above and on the face hereof. Buyer's acceptance of any products provided under this sale shall constitute such assent.

THE FOREGOING WARRANTY IS EXCLUSIVE AND IN LIEU OF ANY AND ALL OTHER WARRANTIES, EXPRESSED OR IMPLIED. NO WARRANTY OF MERCHANTABILITY, NO IMPLIED WARRANTY OF PRODUCT FOR ANY PARTICULAR PURPOSE, AND NO IMPLIED WARRANTY ARISING BY USAGE OF TRADE, COURSE OF DEALING OR COURSE OF PERFORMANCE IS GIVEN BY SELLER OR SHALL ARISE BY OR IN CONNECTION WITH THIS SALE AND/OR THE SELLER'S AND/OR BUYER'S CONDUCT IN RELATION THERETO OR TO EACH OTHER, AND IN NO EVENT SHALL SELLER BE LIABLE FOR ANY SPECIAL INDIRECT, INCIDENTAL OR CONSEQUENTIAL DAMAGES ARISING IN ANY WAY IN CONNECTION WITH ANY PRODUCTS OF THE SALE.

RETURNED MERCHANDISE: No merchandise will be accepted for return without authorization. Merchandise must be returned freight prepaid and will be subject to a 20% handling charge.

TERMS: Invoices are due and payable thirty (30) days from date of invoice. A two (2) percent prompt payment discount on net amount of invoice **Excluding Freight** will be allowed if paid by the 10th. All orders received after the 25th of the month will be considered as of the 1st of the following month for billing purposes.

Possession of this price list shall not be construed as an offer to sell the products listed.

INDEX

DRAINAGE	PAGE
• STANDARD WARRANTY	1
• INDEX	2
• LOAD RECOMMENDATION GUIDE	3
• ROUND BRASS GRATES ON PVC ADAPTER	4
• ROUND BRASS GRATE ON STYRENE ADAPTER	4
• ROUND GRATES	5
• ATRIUM GRATES	6
• SQUARE GRATES	7 - 8
• 6" SQUARE GRATE WITH 4" ADAPTER BASIN	8
• SAND TRAPS	9
• BASIN	9
• LOW PROFILE SQUARE BASIN	10
• CATCH BASINS	10
• ADAPTERS	11
• NOTES	12 - 14

Drainage

**DURA PLASTIC
PRODUCTS, INC.**

P.O.BOX 2097
533 EAST THIRD STREET
BEAUMONT, CA 92223

www.duraplastics.com



“QUALITY BY
DESIGN”

LOAD RECOMMENDATION GUIDE

Load Recommendation Guide

Class A

- Loads of 1-60 psi.
- Recommended for pedestrians, bicycles and wheel chair traffic.

Class B

- Loads of 61-175 psi.
- Recommended for medium-duty pneumatic tire traffic, autos and light trucks at speeds less than 20 m.p.h.

Class C

- Loads of 176-325 psi.
- Recommended for heavy-duty pneumatic tire forklifts and tractor trailers at speeds less than 20 m.p.h., H-20 rated.

Class D

- Loads of 326-575 psi.
- Recommended for heavy-duty hard tire forklifts at speeds less than 20 m.p.h., H-20 rated.

Note: Some installations may require a concrete collar to meet load rating. Loads are based on encasing product in concrete.



“QUALITY BY DESIGN”

Round Brass Grates on PVC adapter

3", 4" sizes.

Satin Brass grate on White PVC body.

Meets Load Rating A.

0-60 psi/Recommended for light pedestrian,bicycle,and wheel chair traffic.

3" Grate fits: 2" schedule 40 pipe, 3"sewer and drain fittings.

4" Grate fits: 3" sewer and drain pipe and 4" sewer and drain fittings.

PART NUMBER	FINISH	SIZE	MASTER CARTON QTY
B030-R	Satin Brass	3"	20
B040-R	Satin Brass	4"	20



Round Brass Grate on Styrene adapter

6" size.

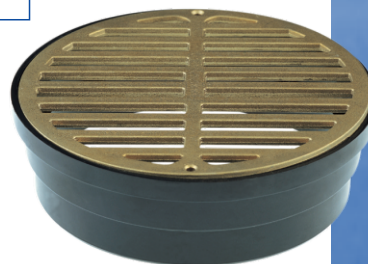
Satin Brass grate with Styrene adapter.

Meets Load Rating A.

0-60 psi/Recommended for light pedestrian,bicycle,and wheel chair traffic.

For use with: 6" round Basin. 6" sewer and drain pipe and 6" sewer and drain fittings.

PART NUMBER	FINISH	SIZE	MASTER CARTON QTY
B-060-R	Satin Brass	6"	10



DRAINAGE



“QUALITY BY DESIGN”

ROUND GRATES

Round Grates

3", 4" sizes. UV Inhibitors to reduce sun damage.

Durable Polypropylene construction.

Meets Load Rating A.
0-60 psi/Recommended for light pedestrian,bicycle,and wheel chair traffic.

For use with: 3", 4" corrugated pipe.
3", 4" double wall pipe.
3", 4" belled end pipe.
3", 4" sewer and drain pipe.
3", 4" sewer and drain fittings.

PART NUMBER	COLOR	SIZE	MASTER CARTON QTY
030-R	Green	3"	40
034-R	Black	3"	40
040-R	Green	4"	40
044-R	Black	4"	40



6", 8" and 10" sizes.

For use with: 6" catch basin.
6" SDR pipe.
6" corrugated pipe / belled end pipe / double wall pipe .
6" SDR fittings.

PART NUMBER	COLOR	SIZE	MASTER CARTON QTY
060-R	Green	6"	10
064-R	Black	6"	10
080-R	Green	8"	10
084-R	Black	8"	10
100-R	Green	10"	10
104-R	Black	10"	10



9", 12" sizes. UV Inhibitors to reduce sun damage.

Durable Hdpe construction.

For use with: 9" and 12" Round catch basins.

PART NUMBER	COLOR	SIZE	MASTER CARTON QTY
090X-RF	Green	9"	10
120X-RF	Green	12"	10





“QUALITY BY DESIGN”

Atrium Grates

3", 4" and 6" sizes.

UV Inhibitors to reduce sun damage.

Durable Polypropylene construction.

For use with: 3", 4", 6" corrugated pipe.
3", 4", 6" triple wall pipe.
3", 4", 6" belled end pipe.
3", 4", 6" sewer and drain pipe.
3", 4", 6" SDR fittings.
6" round catch basin.

PART NUMBER	COLOR	SIZE	MASTER CARTON QTY
030-A	Green	3"	40
034-A	Black	3"	40
040-A	Green	4"	40
044-A	Black	4"	40
060-A	Green	6"	40
064-A	Black	6"	40



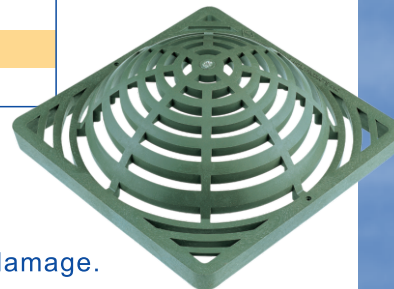
9", 12" sizes.

UV Inhibitors to reduce sun damage.

Durable Polypropylene construction.

For use with: 9" and 12" catch basins.

PART NUMBER	COLOR	SIZE	MASTER CARTON QTY
090-A	Green	9"	10
094-A	Black	9"	10
120-A	Green	12"	10
122-A	Tan	12"	10
124-A	Black	12"	10



9", 12" sizes.

UV Inhibitors to reduce sun damage.

Durable Hdpe construction.

For use with: 9" and 12" Round catch basins.

PART NUMBER	COLOR	SIZE	MASTER CARTON QTY
090X-RA	Green	9"	10
120X-RA	Green	12"	10



ATRIUM GRATES



“QUALITY BY
DESIGN”

SQUARE GRATES

7

Square Grates

4", 5", 6", 7", 8", 9" sizes.

UV Inhibitors to reduce sun damage.

Durable Polypropylene construction.

Meets Load Rating A.

0-60 psi/Recommended for light pedestrian, bicycle, and wheel chair traffic.

For use with: 3", 4", 6" corrugated pipe.

3", 4", 6" triple wall pipe.

3", 4", 6" belled end pipe.

3", 4", 6" sewer and drain pipe.

3", 4", 6" SDR fittings.

6" round catch basin.

PART NUMBER	COLOR	SIZE	MASTER CARTON QTY
040-S	Green	4"	40
044-S	Black	4"	40
050-S	Green	5"	20
054-S	Black	5"	20
060-S	Green	6"	10
064-S	Black	6"	10
070-S	Green	7"	10
074-S	Black	7"	10
080-S	Green	8"	10
084-S	Black	8"	10
090-S	Green	9"	10
094-S	Black	9"	10



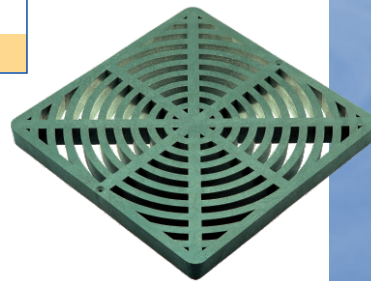


“QUALITY BY DESIGN”

Square Grates

9", 12" sizes. UV Inhibitors to reduce sun damage.
Durable Polypropylene construction.
Meets Load Rating A and B.
0-60 psi/Recommended for light pedestrian, bicycle, and wheel chair traffic.
For use with: 9", 12" catch basins.

PART NUMBER	COLOR	SIZE	MASTER CARTON QTY
090-SF	Green	9"	10
092-SF	Tan	9"	10
094-SF	Black	9"	10
120-SF	Green	12"	10
122-SF	Tan	12"	10
124-SF	Black	12"	10



6" Square Grate with 4" adapter basin

6" size. UV Inhibitors to reduce sun damage.
Durable Polypropylene construction.
Meets Load Rating A.
0-60 psi/Recommended for light pedestrian, bicycle, and wheel chair traffic.
For use with: 3", 4" corrugated pipe.
3", 4" triple wall pipe.
3", 4" sewer and drain pipe.
3", 4" SDR fittings.

PART NUMBER	COLOR	SIZE	MASTER CARTON QTY
040-SCB	Green	6"	10
044-SCB	Black	6"	10



SQUARE GRATES



“QUALITY BY DESIGN”

SAND TRAPS

Sand Traps

6" round sand trap.
9", 12" square sand trap.

ABS Body.

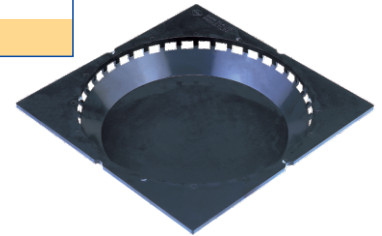
Fits: 6" round basin.
9", 12" low profile basin.

Use with low profile catch basin and 6" round basin to catch debris and silt.
Reduces the risk of pipes clogging.
Ideal for existing installations that require debris containment.
Easy to clean.

PART NUMBER	MATERIAL	SIZE	MASTER CARTON QTY
060-ST	ABS	6"	20

PART NUMBER	MATERIAL	SIZE	MASTER CARTON QTY
090-RST	ABS	9"	20
120-RST	ABS	12"	20

PART NUMBER	MATERIAL	SIZE	MASTER CARTON QTY
090-ST	ABS	9"	20
120-ST	ABS	12"	20



Basin

6" Round.

Cost saving built in universal outlet.
Stackable for easy storage.
Ideal for existing installations that require sand trap.

Fits: 3" and 4" sewer and drain pipe. 3" and 4" corrugated pipe.
3" and 4" triple wall pipe. 4" schedule 40 pipe.

PART NUMBER	MATERIAL	SIZE	MASTER CARTON QTY
060-CB	ABS	6"	20



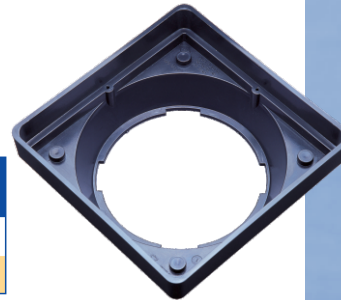


“QUALITY BY DESIGN”

Low Profile Square Basin

9", 12", Square catch basin.

Cost saving low profile.
Low profile for easy installation.
Stackable for easy storage.
Fits Corrugated, sewer and drain pipe
(Requires a UA-001 or UA-060 adapter.)



PART NUMBER	MATERIAL	SIZE	MASTER CARTON QTY
090-CBLP	ABS	9"	20
120-CBLP	ABS	12"	20

Catch Basins

9", 12" Square.

Cost saving built in universal outlet.
Stackable for easy storage.

Fits: 3" and 4" sewer and drain pipe, 3" and 4" corrugated pipe.
3" and 4" triple wall pipe. 4" schedule 40 pipe.



PART NUMBER	MATERIAL	SIZE	MASTER CARTON QTY
090-CB	ABS	9"	10
120-CB	ABS	12"	10

Basin

9", 12" Round.

Cost saving built in universal outlet.
Stackable for easy storage.
Ideal for existing installations that require sand trap.

Fits: 3" and 4" sewer and drain pipe, 3" and 4" corrugated pipe.
3" and 4" triple wall pipe. 4" schedule 40 pipe.



PART NUMBER	MATERIAL	SIZE	MASTER CARTON QTY
090-RCB	ABS	9"	10
120-RCB	ABS	12"	10

CATCH BASINS



“QUALITY BY DESIGN”

ADAPTERS

Adapters

PART NUMBER	MATERIAL	MASTER CARTON QTY
UA-001	ABS Universal Adapter	20



For use with: low profile catch basin.

- Fits:
- 3", 4" SDR pipe.
 - 3", 4" corrugated pipe.
 - 3", 4" Triple wall pipe.
 - 4" Schedule 40 pipe.

Connection is required for the low profile basin. This connection will also work with other manufacturers basins.

PART NUMBER	MATERIAL	MASTER CARTON QTY
UA-060	ABS 6" Adapter	20



For use with: low profile catch basin.

- Fits:
- 6" SDR pipe.
 - 6" corrugated pipe.

Connection is required for the low profile basin. This connection will also work with other manufacturers basins.

PART NUMBER	MATERIAL	MASTER CARTON QTY
UA-Plug	ABS Plug	20



Drainage



A large rectangular area with horizontal yellow dashed lines, intended for handwritten notes.

NOTES





“QUALITY BY
DESIGN”

Drainage

A large rectangular area with horizontal yellow dashed lines, intended for handwritten notes.

NOTES

Drainage



“QUALITY BY DESIGN”

A large rectangular area with horizontal dashed lines, intended for handwritten notes.

NOTES



DURA WAREHOUSES

① CORPORATE

OFFICE (951)845-3161 FAX (951) 845-7644

② PERRY, GA

OFFICE (478) 988-0282
FAX (478) 987-7003

④ FRACKVILLE, PA

OFFICE (570) 874-4651
FAX (570) 874-4652

⑥ SALT LAKE CITY, UT

OFFICE (801) 973-9442
FAX (801) 973-9258

③ BURLINGTON, IA

OFFICE (319) 758-9060
FAX (319) 758-9058
TOLL FREE (800) 758-9060

⑤ CARROLLTON, TX

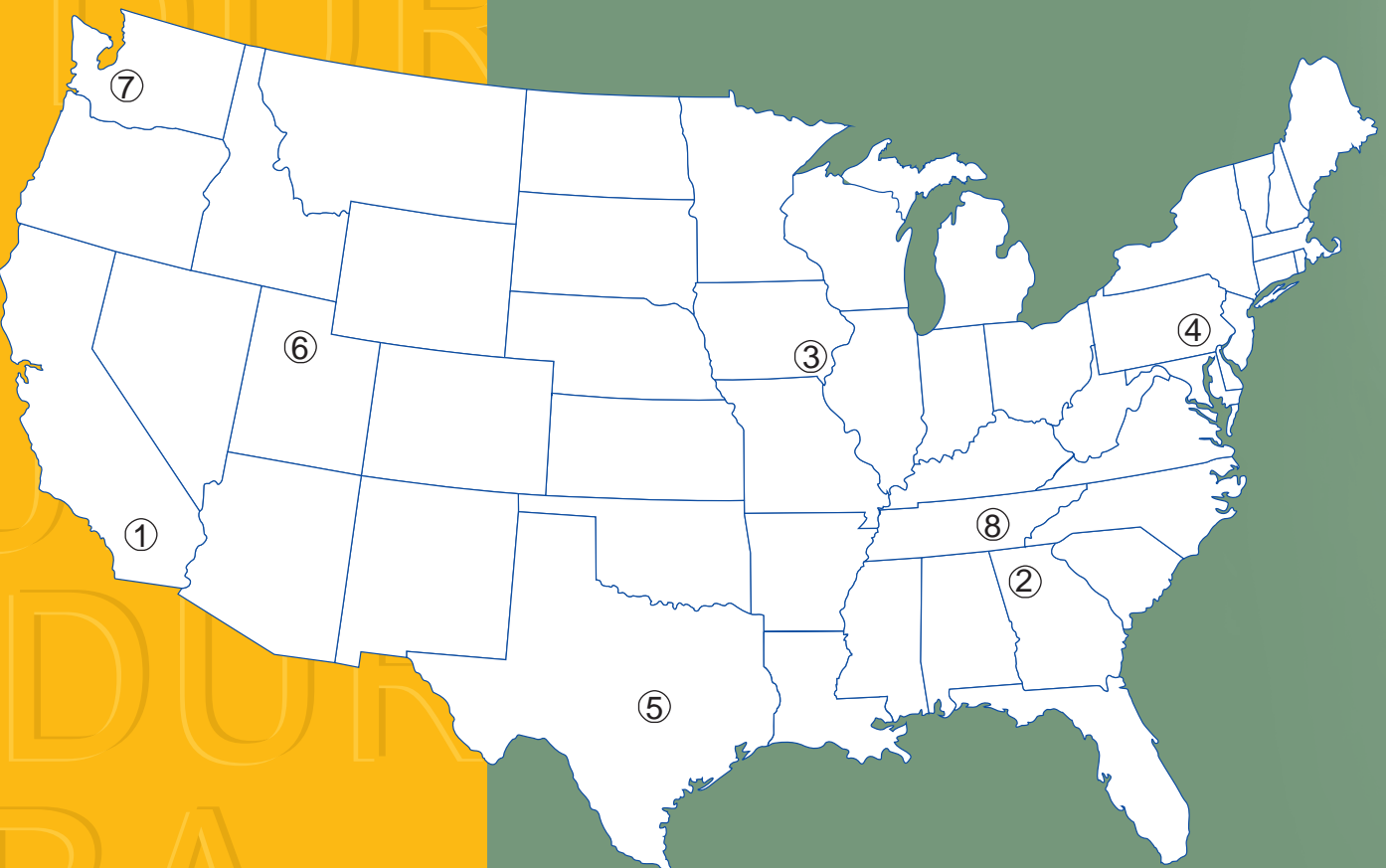
OFFICE (972) 406-8996
FAX (972) 406-0306
ORDER FAX (800) 709-2220

⑦ PASCO, WA

OFFICE (509) 547-7272
FAX (509) 547-0107

⑧ CELINA, TN

OFFICE (931) 243-5544
FAX (931) 243-5542



NATIONAL ORDER DESK

1-(800)854-2323

CALIFORNIA ORDER DESK

1-(800)472-8564

DURA PLASTIC
PRODUCTS, INC.

P.O. BOX 2097
BEAUMONT, CA 92223