



DRY WIRE

DURA PLASTIC PRODUCTS, INC

Pure Silicone Filled Wire Connectors *Tapón aislador relleno de silicón para cables*



For Irrigation Systems and
Landscape Lighting Applications

Para sistemas de riego y de
iluminación del paisaje (LED)





**DRY
WIRE**
DURA PLASTIC PRODUCTS, INC

FEATURES

- Sealed With Pure Dow Corning SP4577 Silicone Sealant.
 - Ensuring the best waterproof connection
- 600 Volt Rating
- Industry Leading Dielectric Strength, 50 mil gap volts/mil: >450
- Industry Leading Volume Resistivity at 73°F (23°C): ohmcm 2.17 x 10¹⁵
- Single Step Connection
 - Pre-twisting of wires is not required. One-and-Done is all it takes for a secure waterproof connection
- Corrosion Proof
- For irrigation systems and landscape lighting applications

CARACTERÍSTICAS

- Sellado con silicón "Pure Dow Corning SP4577".
 - Asegura la mejor conexión a prueba de agua
- Rango de voltaje CA/CD: 120 - 600 voltios
- Resistencia aislante líder en la industria, 50 mil voltios de separación/mil: >450
- Resistencia de volumen a 23°C (73° F): ohmcm 2.17 x 10¹⁵
- Conexión de un solo paso
 - La pre-torsión de cables es innecesaria. Un giro es todo para lograr una conexión segura a prueba de agua
- A prueba de corrosión
- Para sistemas de riego y de iluminación del paisaje (LED)

PRODUCT SPECIFICATIONS

- Max. Voltage: 600V max. building wire (1000V max. signs or luminaries)
- Wire Type: Copper / Copper
- Wire Range: Min. #22 / Max. #6
- Temperature Rating: 105°C (301°F)
- Pure Silicone Sealant: -45°F to 400°F
- UL Designation: SWP
- File E23438, Model GDBY06-10

ESPECIFICACIONES DEL PRODUCTO

- Máximo Voltaje: 600 V. Cable para la construcción (1000V máx. luminarias)
- Tipo de cable: cobre / cobre
- Rango de cable: Mín. #22 / Máx. #6
- Clasificación de temperatura: 105°C (301°F)
- Sellador de silicón: -45°F a 400°F
- Designación UL: SWP
- File E23438, Model GDBY06-10

 **WARNING:** Cancer and Reproductive Harm - www.P65Warnings.ca.gov

Pure Silicone Filled Wire Connectors

Tapón aislador relleno de silicón para cables

INSTALLATION INSTRUCTIONS

ALWAYS TURN OFF POWER BEFORE INSTALLING OR REMOVING CONNECTORS. ONLY INSTALL PER LOCAL AND NATIONAL CODES. NOT FOR USE IN CONTINUOUS SUBMERSION APPLICATIONS.

1. Strip wires larger than #16: 1/2", wires smaller than #16 strip 7/16"
2. Pre-twisting of wires is unnecessary. Hold stripped wires with insulation even.
3. Straighten any frayed strands or bent conductors.
4. Firmly push wire into connector and twist connector clockwise onto wire until tight.

Do not over-tighten and do not reuse.

INSTRUCCIONES DE INSTALACIÓN

DESCONECTAR CORRIENTE ELECTRICA ANTES DE INICIAR LA INSTALACIÓN O QUITAR CONECTORES. USE LOS CODIGOS LOCALES O NACIONALES 110/220 V. NO SE USE EN APLICACIONES DE INMERSIÓN CONTINUA.

1. Los cables mayores al calibre #16 deben ser pelados 1/2" y los cables menores al calibre #16 deben ser pelados 7/16".
2. La pre-torsión de los cables es innecesaria. Sostenga los cables pelados con un aislamiento.
3. Enderece las hebras deshilachadas o los conductores doblados.
4. Empuje firmemente el alambre en el conector y gire el conector hacia la derecha de forma que queden bien apretados.

No lo apriete demasiado y no lo reutilice.

AVAILABLE CONFIGURATIONS

2 WIRE	LOW VOLTAGE LIGHTING	IRRIGATION VALVE	LED LIGHTING
<ul style="list-style-type: none"> • GDBY 	<ul style="list-style-type: none"> • Charcoal Series • GDBY Series • Tan • Blue 	<ul style="list-style-type: none"> • Charcoal Series • GDBY Series • Blue 	<ul style="list-style-type: none"> • Green Series

CONFIGURACIONES DISPONIBLES

2 CABLES	BAJO VOLTAJE EN ILUMINACIÓN	VÁLVULAS DE RIEGO	ILUMINACIÓN LED
<ul style="list-style-type: none"> • GDBY 	<ul style="list-style-type: none"> • Serie de carbón • Serie GDBY • Color bronceado/tostado • Color azul 	<ul style="list-style-type: none"> • Serie de carbón • Serie GDBY • Color azul 	<ul style="list-style-type: none"> • Serie Verde

GDBY06-10

10 PCS. / CANISTER
10 PZAS. / FRASCO

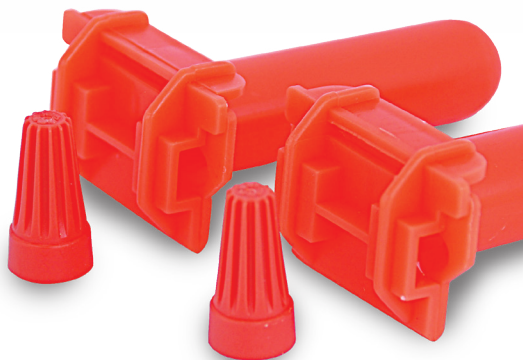
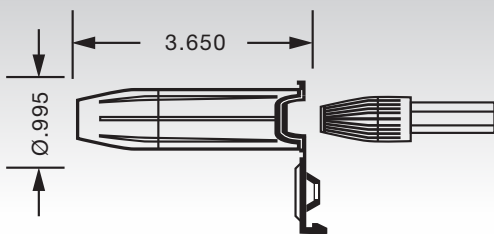
Orange

Suggested Wire Combinations

Naranja

Combinaciones de cables sugeridas

2-3 #14	1 #14 w/1-3 #18,20	3 #16 w/1 #18-22
2-5 #18	2 #14 w/1 #18	1 #18 w/1-4 #20
2 #16 w/1-2 #18	4 #20 w/1 #22	



GG12-22-150

150 PCS. / CANISTER
150 PZAS. / FRASCO

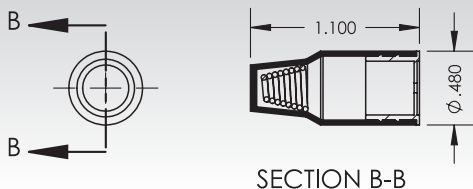
Gray / Gray

Suggested Wire Combinations

Gris / Gris

Combinaciones de cables sugeridas

2 #14	1 #14 w/1-3 #18,20	3 #16 w/1 #18-22
2-5 #18	2 #14 w/1 #18	1 #18 w/1-4 #20
3-5 #20	1 #16 w/1 #18	4 #18 w/1 #20
1 #14 w/1-2 #16	2 #16 w/1-2 #18	4 #20 w/1 #22



LED8-22-100

100 PCS. / CANISTER
100 PZAS. / FRASCO

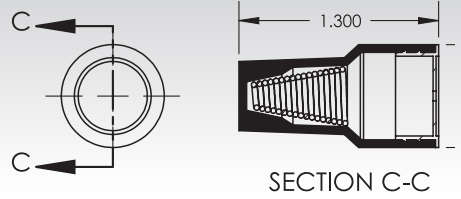
Green

Suggested Wire Combinations

Verde

Combinaciones de cables sugeridas

1-3 #12	2 #14 w/2-4 #16	1 #12 w/1-3 #14
2-4 #14	1 #10 w/1-2 #14	1 #12 w/2-4 #18
2-6 #16	1 #10 w/1-3 #16	1 #14 w/3-4 #18
4 #14 w/1 #18	1 #12 w/1-4 #16	2 #12 w/1 #14



CB6-14-50

50 PCS. / CANISTER
50 PZAS. / FRASCO

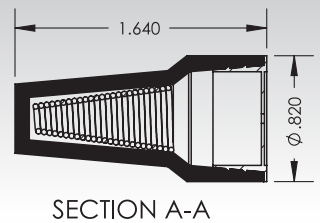
Charcoal / Blue

Suggested Wire Combinations

Carbón / Azul

Combinaciones de cables sugeridas

2 #8	1 #10 w/3-5 #14	4 #12 w/1 #14
2-3 #10	2 #10 w/1-2 #12	1 #10 w/2-3 #12
3-5 #12	2 #10 w/1-3 #14	
3 #12 w/1 #14	3 #10 w/1-2 #18	



T6-14-50

50 PCS. / CANISTER
50 PZAS. / FRASCO

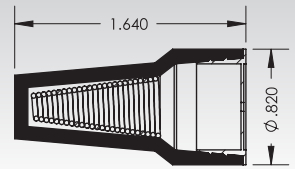
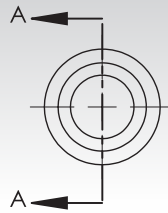
Tan

Suggested Wire Combinations

Bronceado / Tostado

Combinaciones de cables sugeridas

2 #8	1 #10 w/3-5 #14	4 #12 w/1 #14
2-3 #10	2 #10 w/1-2 #12	1 #10 w/2-3 #12
3-5 #12	2 #10 w/1-3 #14	
3 #12 w/1 #14	3 #10 w/1-2 #18	



SECTION A-A



CG8-22-100

100 PCS. / CANISTER
100 PZAS. / FRASCO

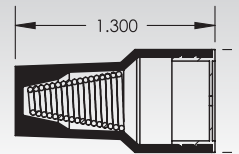
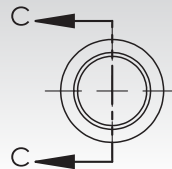
Charcoal / Gray

Suggested Wire Combinations

Carbón / Gris

Combinaciones de cables sugeridas

1-3 #12	2 #14 w/2-4 #16	1 #12 w/1-3 #14
2-4 #14	1 #10 w/1-2 #14	1 #12 w/2-4 #18
2-6 #16	1 #10 w/1-3 #16	1 #14 w/3-4 #18
4 #14 w/1 #18	1 #12 w/1-4 #16	2 #12 w/1 #14

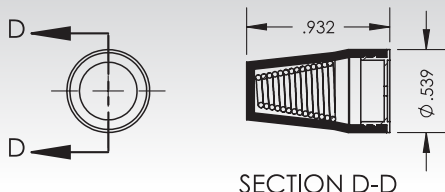


SECTION C-C



BB12-22-150

150 PCS. / CANISTER
150 PZAS. / FRASCO



Blue / Blue

Suggested Wire Combinations

Azul / Azul

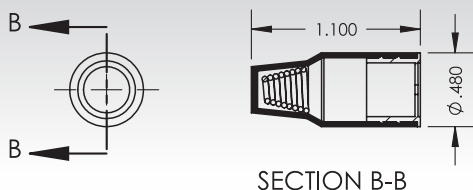
Combinaciones de cables sugeridas

2 #14	1 #14 w/1-3 #18,20	3 #16 w/1 #18-22
2-5 #18	2 #14 w/1 #18	1 #18 w/1-4 #20
3-5 #20	1 #16 w/1 #18	4 #18 w/1 #20
1 #14 w/1-2 #16	2 #16 w/1-2 #18	4 #20 w/1 #22



CW12-22-150

150 PCS. / CANISTER
150 PZAS. / FRASCO



Charcoal / White

Suggested Wire Combinations

Carbón / Blanco

Combinaciones de cables sugeridas

2 #14	1 #14 w/1-3 #18,20	3 #16 w/1 #18-22
2-5 #18	2 #14 w/1 #18	1 #18 w/1-4 #20
3-5 #20	1 #16 w/1 #18	4 #18 w/1 #20
1 #14 w/1-2 #16	2 #16 w/1-2 #18	4 #20 w/1 #22



DURA WAREHOUSES / PEDIDOS NACIONALES

① CORPORATE

Office (951) 845-3161
Fax (951) 845-7644

② PERRY, GA

Office (478) 988-0282
Fax (478) 987-7003

③ BURLINGTON, IA

Office (319) 758-9061
Fax (319) 758-9058

④ FRACKVILLE, PA

Office (570) 874-4651
Fax (570) 874-4652

⑤ CARROLLTON, TX

Office (972) 406-8996
Fax (972) 406-0306

⑥ SALT LAKE CITY, UT

Office (801) 973-9442
Fax (801) 973-9258

⑦ PASCO, WA

Office (509) 547-7272
Fax (509) 547-0107

⑧ CELINA, TN

Office (931) 243-5544
Fax (931) 243-5542



TM

DURA PLASTIC PRODUCTS INC

NATIONAL ORDER DESK
PEDIDOS NACIONALES

1 (800) 854-2323

CALIFORNIA ORDER DESK
PEDIDOS EN CALIFORNIA

1 (800) 472-8564

DURA PLASTIC PRODUCTS, INC.

P.O. BOX 2097
Beaumont, CA 92223

800-854-2323

www.duraplastics.com