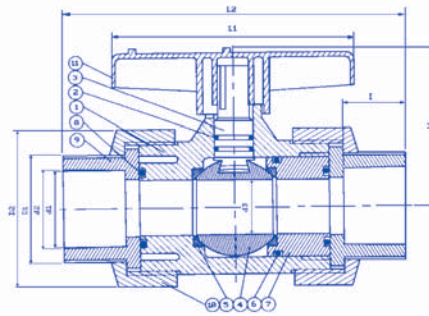
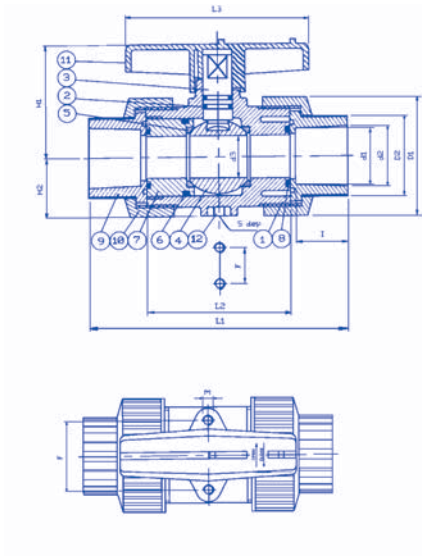


"SAFETY BLOCK" TRUE UNION BALL VALVE

ENGINEERING SPECIFICATIONS



"QUALITY BY DESIGN"



SIZES 1/2" - 2"

ITEM	PART	PIECES	MATERIAL
1	BODY	1	PVC
2	STEM O-RING	2	EPDM, FPM
3	STEM	1	PVC
4	BALL	1	PVC
5	SEAT SEAL	2	PTFE
6	CARRIER O-RING	1	EPDM, FPM
7	SEAL CARRIER	1	PVC
8	UNION O-RING	2	EPDM, FPM
9	END CONNECTOR	2	PVC
10	UNION NUT	2	PVC
11	HANDLE	1	ABS
12	INSERTED NUT	2,4	C3604

SIZES 2 1/2" - 4"

ITEM	PART	PIECES	MATERIAL
1	BODY	1	PVC
2	STEM O-RING	2	EPDM, FPM
3	STEM	1	PVC
4	BALL	1	PVC
5	SEAT SEAL	2	PTFE
6	CARRIER O-RING	1	EPDM, FPM
7	SEAL CARRIER	1	PVC
8	UNION O-RING	2	EPDM, FPM
9	END CONNECTOR	2	PVC
10	UNION NUT	2	PVC
11	HANDLE	1	ABS

ANSI DIMENSIONS

SIZE	d1	d2	I	d3	D1	D2	L1	L2	L3	H	H1	H2	F	S	M	TEST PRESSURE Lb/in ²
15mm (1/2")	21.23	21.54	22.22	13	45	31	111	60	78	--	48	--	--	--	--	225
20mm (3/4")	26.57	26.87	25.40	18	55	37	130	73	92	--	58	26	33	8	M6	225
25mm (1")	33.27	33.65	28.58	23	66	44	145	78	100	--	65	33	40	11	M6	225
30mm (1 1/4")	42.04	42.42	31.75	30	81	54	165	87	110	--	75.5	38	47	11	M8	225
40mm (1 1/2")	48.11	48.56	34.93	38	96	65	171	92	121	--	88	42	52	11	M8	225
50mm (2")	60.17	60.63	38.10	48	119	78	200	112	147	--	107.5	53	70	15	M8	225
65mm (2 1/2")	72.85	73.38	44.45	60	91	136	180	275	--	119	--	--	--	--	--	225
80mm (3")	88.70	89.31	47.63	69	107	156	239	300	--	129	--	--	--	--	--	225
100mm (4")	114.07	114.76	57.15	100	145	224	278	328	--	176	--	--	--	--	--	225

25.4mm = 1" (inch)

PVC VALVES
ENGINEERING SPECIFICATIONS
APPENDIX D