

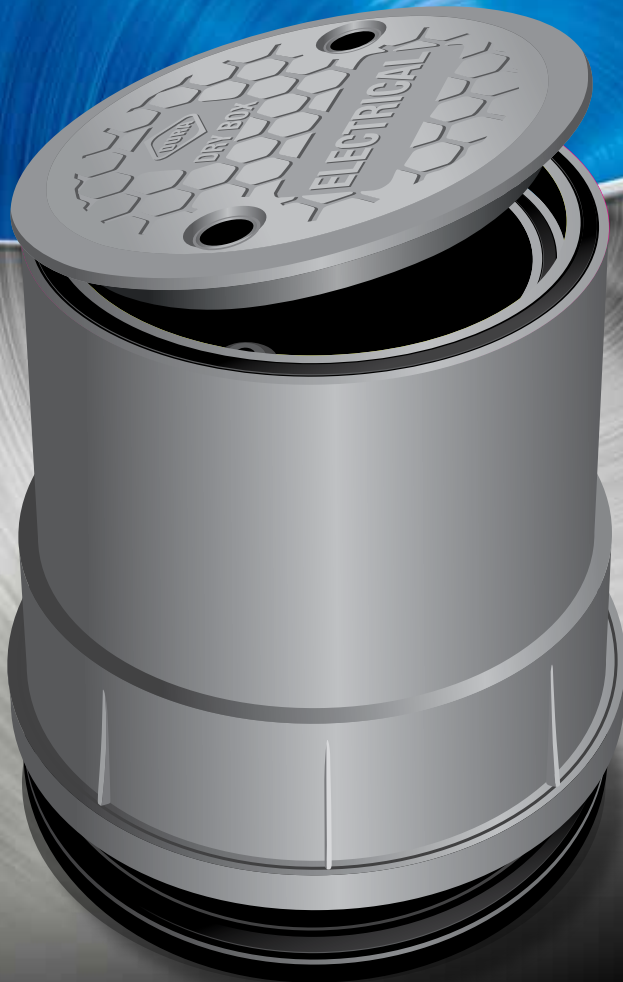
# THE DRY BOX *by*



TM  
DURA PLASTIC PRODUCTS INC

**12" ROUND**

**SPECIFICATION  
AND INFORMATION**



800-854-2323

[www.duraplastics.com](http://www.duraplastics.com)

# THE DRY BOX *by*



**TO:** All Landscape Architects, Designers, Distributors, Irrigation Contractors, Electrical Contractors, Municipalities, Government Agencies and Homeowners

**RE:** New Product Introduction

**Dear Sir / Madam,**

Once again, through discussions with many of you, and listening and understanding the needs our industry faces, Dura Plastics is proud to announce the **New, WORK SMART...WORK SAFE...DRY BOX**, a water resistant and insect resistant line of Valve Boxes.

Quickly becoming the new industry standard, these Double Face Sealed Valve Boxes prevent water, insects, snakes, rodents, and other unwanted pests from entering through unsecured lids and bolt holes. A base will keep out any burrowing rodents, insects, or amphibians.

#### **How It Works**

As proven in the aerospace and automotive industries, Dura Plastics has incorporated a "Double" Face Seal into their new line of Dry Boxes. Molded grooves on both the outside circumference of the box and the inner circumference allows the proprietary molded seals to compress in two locations. The seal is achieved by two strategically placed bolt down locations allowing for the uniform compression of the seals as well as security. The lid, molded with its honeycomb design, adds additional strength and has several attributes molded directly into the surface assuring a simple, trouble free installation. Using a series of unique opposing molded ridges and a rubber gasket creates a bottom seal to ensure no intrusion.

We have enclosed the following list of documents for your review:

1. A Written Architectural Specification
2. Detailed Dimensional Information
3. A copy of the standard Dry Box point of purchase marketing and packaging label that will be affixed to every box
4. Informational Advertisement you will begin to see in many upcoming industry magazines
5. Certificate of Compliance
6. Part Numbers and Descriptions
7. New Features
8. Original Dry Box Part Numbers and Descriptions

Please feel free to call us with any questions or comments.  
It is what makes this industry move forward.

**800-854-2323**  
**www.duraplastics.com**



## ARCHITECTURAL SPECIFICATION

Valve Boxes shall be constructed from High Density Polyethylene material. The Valve Box shall be water resistant incorporating a double face compression seal.

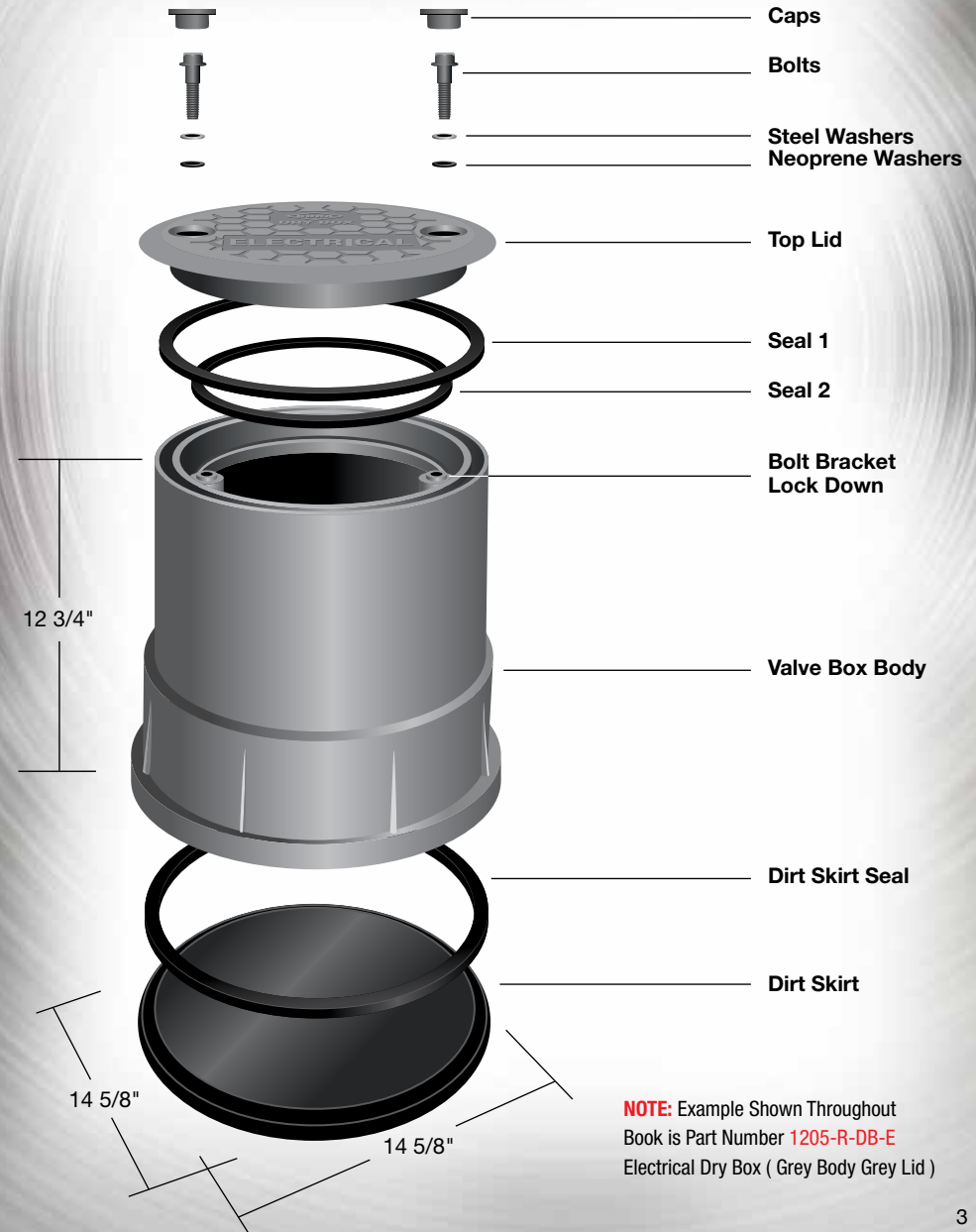
**Valve Box Lid** shall be designed and manufactured with two bolt down locations allowing uniform compression of proprietary molded seals. Valve Box Lid shall also be manufactured with honeycomb strength design. Bolts and bolt covers will be included with each box. The bolt covers shall be manufactured from HDPE and serve a dual purpose of keeping bolt area clean for ease of serviceability and also provide concealment from vandals.

**Valve Box Body** shall include molded seal channels around the outside circumference and the inner circumference of the Valve Box. Valve Box shall also contain two recessed 3/8" nuts. Valve Box Body shall have a sealed bottom face, known as the "Dirt Skirt" to prevent water and burrowing rodents from entering. The bottom seal shall be achieved by the utilization of a series of opposing ridges molded directly into both the bottom circumference of the Valve Box Body and Dirt Skirt.

As Manufactured By:  
**Dura Plastic Products, Inc.**  
 1520 Gainesboro Highway  
 Celina, TN 38551  
 931-243-5544



## DETAILED DIMENSIONAL INFORMATION



**NOTE:** Example Shown Throughout Book is Part Number 1205-R-DB-E Electrical Dry Box ( Grey Body Grey Lid )

# THE DRY BOX by



POINT OF PURCHASE MARKETING AND  
PACKAGING LABEL

**THE DRY BOX**

**WATER RESISTANT**  
12" Round Valve Box

- Keeps Wires Dry
- Keeps Work Area Safe
- Keeps Work Area Clean
- Keeps Surface Water from Entering

**"Dirt Skirt"**  
Rubber Gasket Sealed Bottom Plate  
Included!

**Compression Sealing System**

MADE IN THE USA

www.duraplastics.com

12" ROUND DRY BOX LABEL FRONT



# THE DRY BOX by



INFORMATIONAL ADVERTISEMENT

**12" ROUND**

**WATER RESISTANT ELECTRICAL JUNCTION**

COMPRESSION LOCKS  
 COMPRESSION SEALING SYSTEM  
 12" IPS SOCKET TO ACCEPT 12" PIPE  
 DIRT-SKIRT BOTTOM PLATE

**WATER RESISTANT**

- Keeps Wires Dry
- Keeps Work Area Safe
- Keeps Work Area Clean
- Keeps Surface Water from Entering

**THE DRY BOX by**

MADE IN THE USA

800-854-2323 • www.duraplastics.com

DURA PLASTIC PRODUCTS INC

12" ROUND DRY BOX MAGAZINE AD



## CERTIFICATE OF COMPLIANCE VALVE BOX

To Whom It May Concern:

This is to certify that all Valve Box products have been manufactured utilizing materials formulated and tested to adhere to the properties shown below. We certify that where physical and/or chemical test requirements are part of the specification, Dura Plastics has performed these tests to substantiate this certification.

Properties of Base Material	ASTM Test Method	HDPE
Tensile Strength	D-638	2,700 – 4,400 psi (Typical Range)
Flexural Modulus	D-790	Min 140,000 not to exceed 240,000 psi
Notched Izod Impact Strength	D-256	0.5 – 3.0 (Typical Range)
Deflection Temperature @ 66psi	D-648	150°- 200°F. (Typical Range)
Density	D-792	Min. 0.950 not to exceed 0.965
Electric Dielectric Strength	D-149	400 – 600 V/mil (Typical Range)
<b>Molded Product</b>		
Chemical Resistance	D-543	Very Resistant
Water Absorption	D-570	Less than 1% weight change

In addition, all Valve Box products carry a **Static Vertical Load Rating** of SCTE (Light Duty, Pedestrian) and have been tested in accordance with the requirements of the Fabricated Access Covers Trade Association (FACTA) Specification for fabricated Access Covers, Version 4.0/2001, sections 7.4 and 7.5.

Our Valve Boxes are proudly made in the USA.

**QUALITY BY DESIGN**

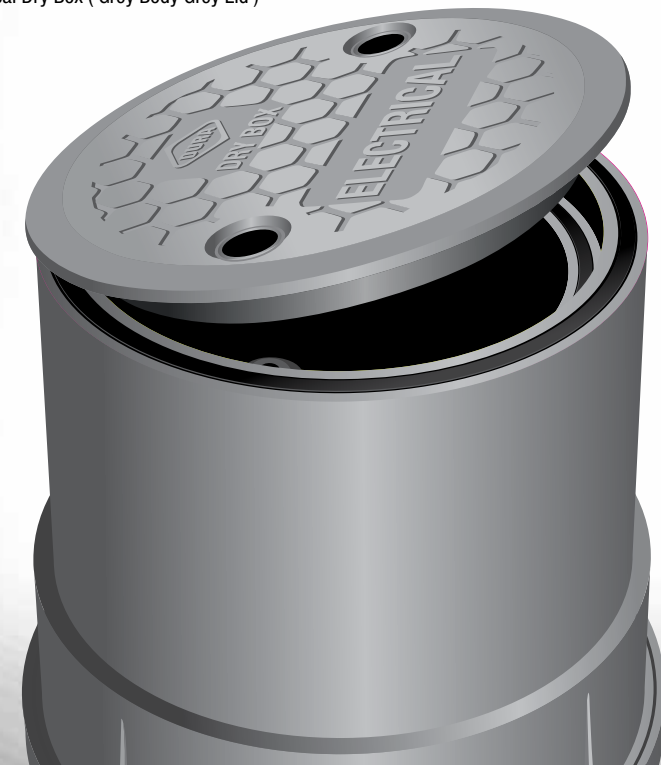


## PART NUMBERS AND DESCRIPTIONS

### DRY BOX

Part Number	Dimension	Color
1200-R-DB	14 5/8"W X 14 5/8"W X 12 3/4"H	Black Body Green Lid
1201-R-DB	14 5/8"W X 14 5/8"W X 12 3/4"H	Green Body Green Lid
1202-R-DB	14 5/8"W X 14 5/8"W X 12 3/4"H	Tan Body Tan Lid
1203-R-DB	14 5/8"W X 14 5/8"W X 12 3/4"H	Purple Body Purple Lid
1204-R-DB	14 5/8"W X 14 5/8"W X 12 3/4"H	Black Body Black Lid
1205-R-DB-E	14 5/8"W X 14 5/8"W X 12 3/4"H	Grey Body Grey Lid

**NOTE:** Example Shown is Part Number **1205-R-DB-E**  
Electrical Dry Box ( Grey Body Grey Lid )

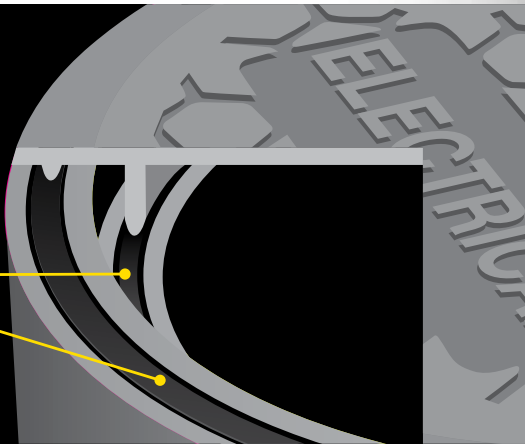


# THE DRY BOX by



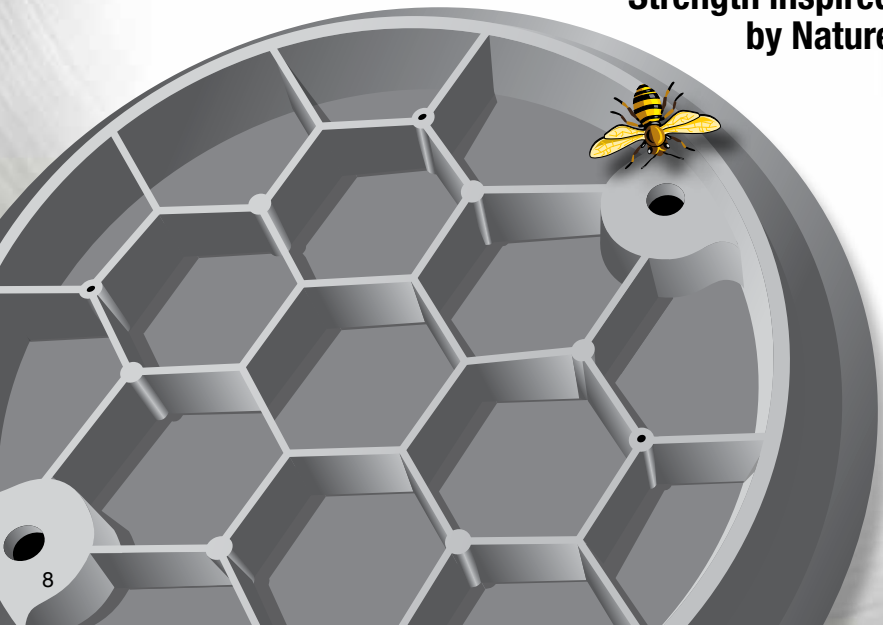
## NEW FEATURES

Innovative  
**DOUBLE SEAL**  
Design



## NEW **HONEYCOMB** LID DESIGN

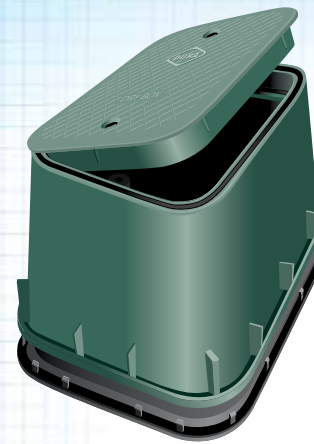
Strength inspired  
by Nature



# THE DRY BOX by



## ALSO AVAILABLE THE ORIGINAL DRY BOX



*Green Body Green Lid Example*



*Grey Body Grey Lid Example*

See Our  
**IMPACT** Video at  
[www.duraplastics.com](http://www.duraplastics.com)



## PART NUMBERS AND DESCRIPTIONS

### DRY BOX

Part Number	Dimension	Color
120-DB-2	12"W X 17"L X 12"H	Black Body Green Lid
121-DB-2	12"W X 17"L X 12"H	Green Body Green Lid
122-DB-2	12"W X 17"L X 12"H	Tan Body Tan Lid
123-DB-2	12"W X 17"L X 12"H	Purple Body Purple Lid
124-DB-2	12"W X 17"L X 12"H	Black Body Black Lid
125-DB-2	12"W X 17"L X 12"H	Grey Body Grey Lid

### DIRT SKIRT

Part Number	Dimension	Color
12DS	15.75"W X 21.75"L	Black

# DURA WAREHOUSES

## ① CORPORATE

Office (951) 845-3161  
Fax (951) 845-7644

## ② PERRY, GA

Office (478) 988-0282  
Fax (478) 987-7003

## ③ BURLINGTON, IA

Office (319) 758-9060  
Fax (319) 758-9058

## ④ FRACKVILLE, PA

Office (570) 874-4651  
Fax (570) 874-4652

## ⑤ CARROLLTON, TX

Office (972) 406-8996  
Fax (972) 406-0306

## ⑥ SALT LAKE CITY, UT

Office (801) 973-9442  
Fax (801) 973-9258

## ⑦ PASCO, WA

Office (509) 547-7272  
Fax (509) 547-0107

## ⑧ CELINA, TN

Office (931) 243-5544  
Fax (931) 243-5542



TM

DURA PLASTIC PRODUCTS INC

NATIONAL ORDER DESK

1 (800) 854-2323

CALIFORNIA ORDER DESK

1 (800) 472-8564

DURA PLASTIC PRODUCTS, INC.

P.O. BOX 2097  
Beaumont, CA 92223

800-854-2323

[www.duraplastics.com](http://www.duraplastics.com)