

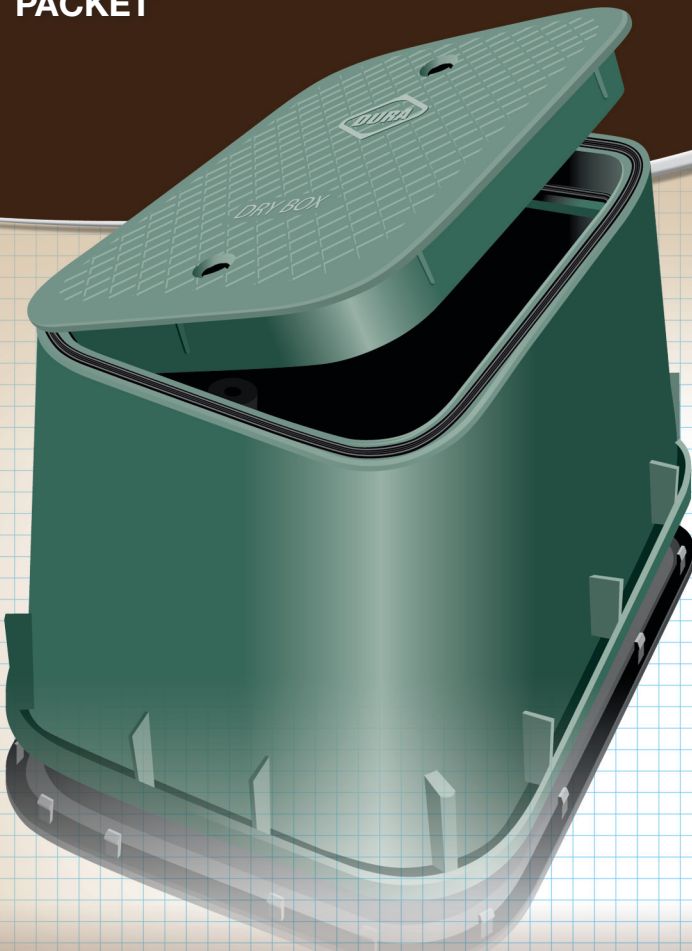
# THE DRY BOX *by*



TM

DURA PLASTIC PRODUCTS INC

## SPECIFICATION AND INFORMATION PACKET



800-854-2323

[www.duraplastics.com](http://www.duraplastics.com)



# THE DRY BOX *by*



**TO:** All Landscape Architects, Designers, Distributors, Irrigation Contractors, Electrical Contractors, Municipalities, Government Agencies and Homeowners

**RE:** New Product Introduction

**Dear Sir / Madam,**

Once again, through discussions with many of you, and listening and understanding the needs our industry faces, Dura Plastics is proud to announce the **New, WORK SMART...WORK SAFE...DRY BOX**, a water resistant and insect resistant line of Valve Boxes.

Quickly becoming the new industry standard, these Double Face Sealed Valve Boxes prevent water, insects, snakes, rodents, and other unwanted pests from entering through unsecured lids and bolt holes. An optional base will keep out any burrowing rodents, insects, or amphibians, and an optional under lid accessory plate will keep any electronics organized, clean, and easily serviceable.

## **How It Works**

As proven in the aerospace and automotive industries, Dura Plastics has incorporated a "Double" Face Seal into their new line of Dry Boxes. Molded grooves on both the outside circumference of the box and the inner circumference allows the proprietary molded seals to compress in two locations. The seal is achieved by two strategically placed bolt down locations allowing for the uniform compression of the seals as well as security. The lid, molded with its honeycomb design, adds additional strength and has several attributes molded directly into the surface assuring a simple, trouble free installation. An optional "Snap Tight" base may also be purchased. Using a series of unique opposing molded ridges, 16 "Snap Tight Tabs" and a rubber gasket will create a bottom seal to ensure no intrusion.

We have enclosed the following list of documents for your review:

- 1.** A Written Architectural Specification
- 2.** Detailed Dimensional Information
- 3.** A copy of the standard Dry Box point of purchase marketing and packaging label that will be affixed to every box with detailed installation instructions printed on the reverse
- 4.** A copy of the standard Dirt Skirt point of purchase marketing and packaging label that will be affixed to every box
- 5.** Informational Advertisement you will begin to see in many upcoming industry magazines
- 6.** Certificate of Compliance
- 7.** Part Numbers and Descriptions
- 8.** New Features

Please feel free to call us with any questions or comments.  
It is what makes this industry move forward.

# THE DRY BOX *by*



## ARCHITECTURAL SPECIFICATION

Valve Boxes shall be constructed from High Density Polyethylene material. The Valve Box shall be water resistant incorporating a double face compression seal.

**Valve Box Lid** shall be designed and manufactured with two bolt down locations allowing uniform compression of proprietary molded seals. Valve Box Lid shall also be manufactured with honeycomb strength design. Bolts and bolt covers will be included with each box. The bolt covers shall be manufactured from HDPE and serve a dual purpose of keeping bolt area clean for ease of serviceability and also provide concealment from vandals.

**Valve Box Lid** shall have the ability to adapt an internal accessory plate and be able to accept various manufacturers electronics through its unique bolt pattern and design.

**Valve Box Body** shall include molded seal channels around the outside circumference and the inner circumference of the Valve Box. Valve Box shall also contain two recessed 3/8" nuts.

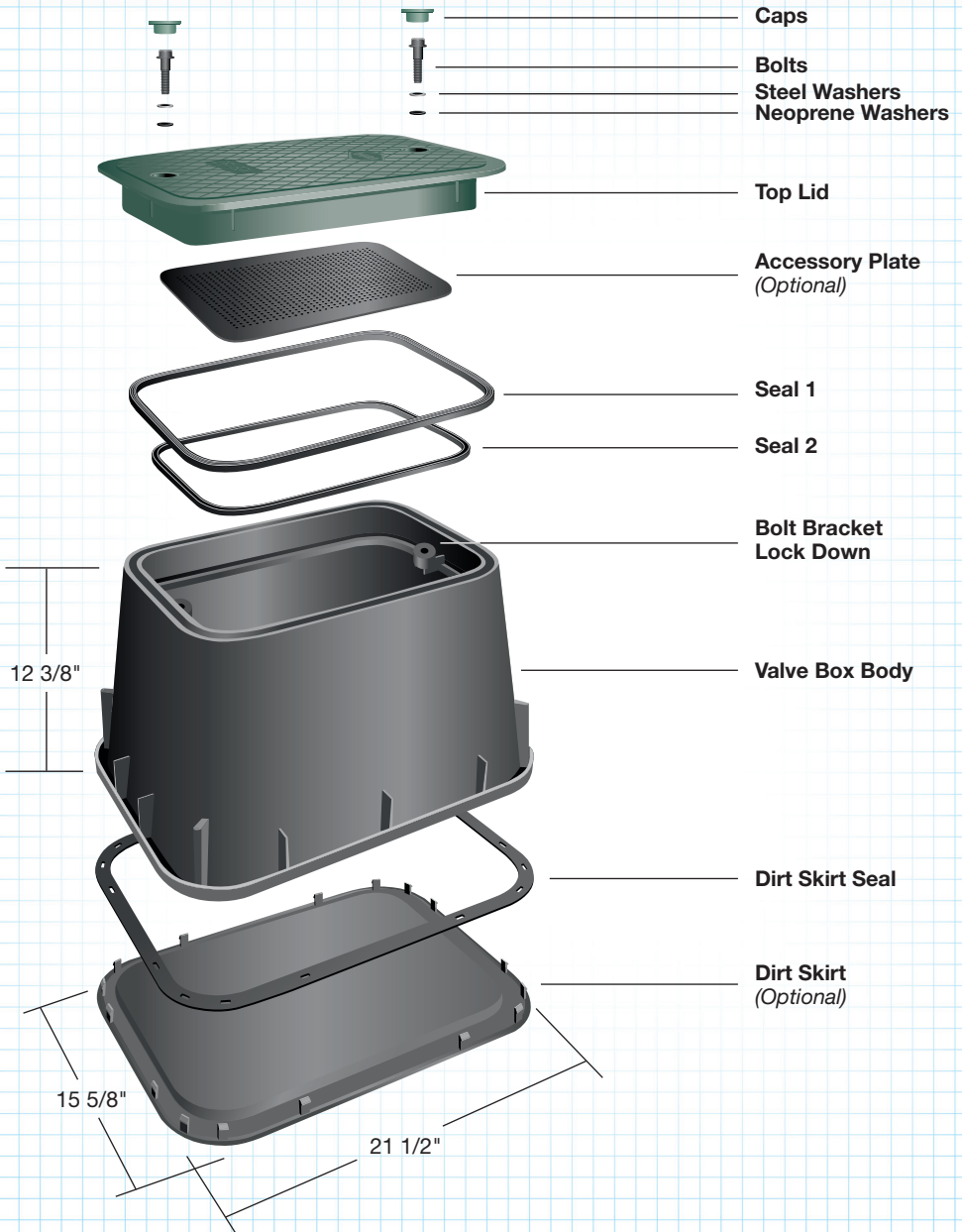
**Valve Box Body** shall have the ability to add a sealed bottom face, known as the "Dirt Skirt" to prevent water and burrowing rodents from entering. The bottom seal shall be achieved by the utilization of a series of opposing ridges molded directly into both the bottom circumference of the Valve Box Body and Dirt Skirt. The Dirt Skirt shall have 16 "Snap Tight Tabs" to ensure uniform pressure between Valve Box Body and the Dirt Skirt.

As Manufactured By:  
**Dura Plastic Products, Inc.**  
**1520 Gainesboro Highway**  
**Celina, TN 38551**  
**931-243-5544**

# THE DRY BOX *by*



## DETAILED DIMENSIONAL INFORMATION



# THE DRY BOX *by*



## POINT OF PURCHASE MARKETING AND PACKAGING LABEL

# THE DRY BOX *by*



DURA PLASTIC PRODUCTS INC

Compression Locks

Compression Sealing System

### WATER RESISTANT



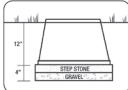
[www.duraplastics.com](http://www.duraplastics.com)

- Keeps Wires Dry
- Keeps Work Area Safe
- Keeps Work Area Clean
- Keeps Surface Water from Entering
- Professional Installation Instructions on Back (Remove Carefully)

### DRY BOX LABEL FRONT

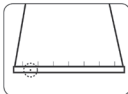
### Our Recommended Instructions for a Professional, Trouble Free Installation

1. Choose desired location for installation.
2. Dig hole 4" deeper than Valve Box height.
3. Level bottom of the hole.
4. Place 2" of gravel at bottom of hole to help with any ground water (important in areas with clay soils).
5. Purchase large 18" x 18" concrete stepping stone from your local garden center.



6. Level stepping stone on gravel base to create clean work area.
7. Lay-out valve manifold / irrigation system on concrete stepping stone.

8. Assemble system by connecting water supply and sprinkler zones.
9. Once assembly is complete, remove lid from box. Locate the bolt-caps in the center of the lid. Remove bolt cap gently with a screwdriver and loosen bolt. Lid can now be easily removed.



10. Remove Valve Box from hole. With a hole saw, drill between your marks. (Refer to hole saw chart for proper sizing). When drilling, place pilot drill from hole saw directly above the bottom lip of the valve box. This will leave approximately 1/2 of the hole saw not cutting through the box (see example).

The desired shape is a "horseshoe", leaving an open-ended bottom.

11. The hole saw may leave a small radius at the open end of the hole. With a hack saw, cut a vertical line eliminating the radius making a true "horseshoe" shape with vertical sides (see example).



12. Once all water inlet and outlets have been drilled out of box, reset Valve Box over valve manifold to assure desired fit. If box does not sit firmly on stepping stone, review any areas that may be binding and cut / file any adjustments.

13. If system contains electric valves, make sure wires are pulled and secure before backfilling. A separate hole can be drilled in the side of the box for a "wire pull". Note: Select the size of the drill closest to the size of the outside diameter of the wire. This will insure a professional look and fit.

(Caution: make sure wires are not pinched)

14. Once satisfied with installation, replace lid securely on the box.
15. Tighten center bolt to apply seal pressure, then replace bolt cap.

- (Packing lid on box will help prevent dirt from entering valve area during backfilling)
16. Backfill soil to grade.

#### HOLE SAW SIZING CHART

1/2" Pipe	= 3/4" Hole Saw
3/4" Pipe	= 1" Hole Saw
1" Pipe	= 1-1/4" Hole Saw
1-1/4" Pipe	= 1-1/2" Hole Saw

#### REQUIRED TOOLS

1. Shovel
2. Tape Measure
3. Drill
4. Hole Saw Set
5. Drill Bit Set
6. Hack Saw
7. Gloves and Safety Glasses
8. Screwdriver
9. 3/4" Socket and Ratchet

**Do It Once...Do It Right...Do It Dura**

NATIONAL ORDER DESK  
1-(800) 854-2323

CALIFORNIA ORDER DESK  
1-(800) 472-8564

FACSIMILE TERMINAL  
(951) 845-7644

P.O. BOX 2097  
BEAUMONT, CA 92223

### DRY BOX LABEL BACK INSTRUCTIONS



# THE DRY BOX *by*



## DIRT SKIRT ACCESSORY PACKAGING LABEL

**THE DRY BOX *by***

**DURA**

**Dirt Skirt  
ACCESSORY**

DURA PLASTIC PRODUCTS INC

- Water Resistant
- Keeps Work Area Clean
- Easy Installation
- No Tools Required

Replaces 18" x 18" Stepping Stone  
for Trouble Free Installation

Water Resistant  
Gasket Included

Dirt Skirt  
with Snap Tabs

[www.duraplastics.com](http://www.duraplastics.com)

DIRT SKIRT LABEL



# THE DRY BOX *by*



## INFORMATIONAL ADVERTISEMENT



### WATER RESISTANT

Keeps  
Wires Dry

Keeps Work  
Area Safe

Keeps Work  
Area Clean

Keeps Surface Water  
from Entering

# THE DRY BOX *by*

*Stamp Your Design with Peace of Mind*



800-854-2323 • [www.duraplastics.com](http://www.duraplastics.com)



DURA PLASTIC PRODUCTS INC





## CERTIFICATE OF COMPLIANCE VALVE BOX

To Whom It May Concern:

This is to certify that all Valve Box products have been manufactured utilizing materials formulated and tested to adhere to the properties shown below. We certify that where physical and/or chemical test requirements are part of the specification Dura Plastics has performed these tests to substantiate this certification.

<b>Properties of Base Material</b>	<b>ASTM Test Method</b>	<b>HDPE</b>
Tensile Strength	D-638	2,700 – 4,400 psi (Typical Range)
Flexural Modulus	D-790	Min 140,000 not to exceed 240,000 psi
Notched Izod Impact Strength	D-256	0.5 – 3.0 (Typical Range)
Deflection Temperature @ 66psi	D-648	150°- 200°F. (Typical Range)
Density	D-792	Min. 0.950 not to exceed 0.965
Electric Dielectric Strength	D-149	400 – 600 V/mil (Typical Range)
<b>Molded Product</b>		
Chemical Resistance	D-543	Very Resistant
Water Absorption	D-570	Less than 1% weight change

In addition, all Valve Box products carry a **Static Vertical Load Rating** of SCTE (Light Duty, Pedestrian) and have been tested in accordance with the requirements of the Fabricated Access Covers Trade Association (FACTA) Specification for fabricated Access Covers, Version 4.0/2001, sections 7.4 and 7.5.

Our Valve Boxes are proudly made in the USA.

**QUALITY BY DESIGN**

# THE DRY BOX *by*



## PART NUMBERS AND DESCRIPTIONS

### DRY BOX

Part Number	Dimension	Color
120-DB-2	12"W X 17"L X 12"H	Black Body Green Lid
121-DB-2	12"W X 17"L X 12"H	Green Body Green Lid
122-DB-2	12"W X 17"L X 12"H	Tan Body Tan Lid
123-DB-2	12"W X 17"L X 12"H	Purple Body Purple Lid
124-DB-2	12"W X 17"L X 12"H	Black Body Black Lid
125-DB-2	12"W X 17"L X 12"H	Grey Body Grey Lid

### DIRT SKIRT

Part Number	Dimension	Color
12DS	15.75"W X 21.75"L	Black

See Our **IMPACT Video** at  
[www.duraplastics.com](http://www.duraplastics.com)

# THE DRY BOX *by*



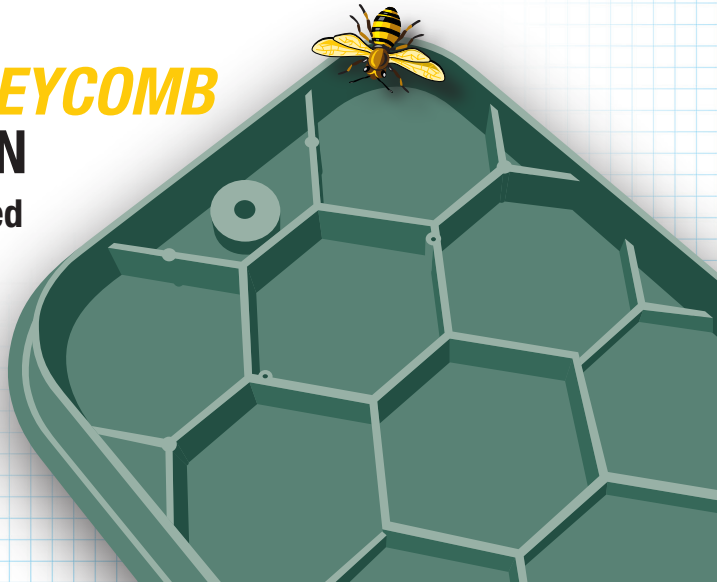
## NEW FEATURES

Innovative  
***DOUBLE SEAL***  
Design



NEW ***HONEYCOMB***  
LID DESIGN

Strength inspired  
by Nature



# DURA WAREHOUSES

## ① CORPORATE

Office (951) 845-3161  
Fax (951) 845-7644

## ② PERRY, GA

Office (478) 988-0282  
Fax (478) 987-7003

## ③ BURLINGTON, IA

Office (319) 758-9060  
Fax (319) 758-9058

## ④ FRACKVILLE, PA

Office (570) 874-4651  
Fax (570) 874-4652

## ⑤ CARROLLTON, TX

Office (972) 406-8996  
Fax (972) 406-0306

## ⑥ SALT LAKE CITY, UT

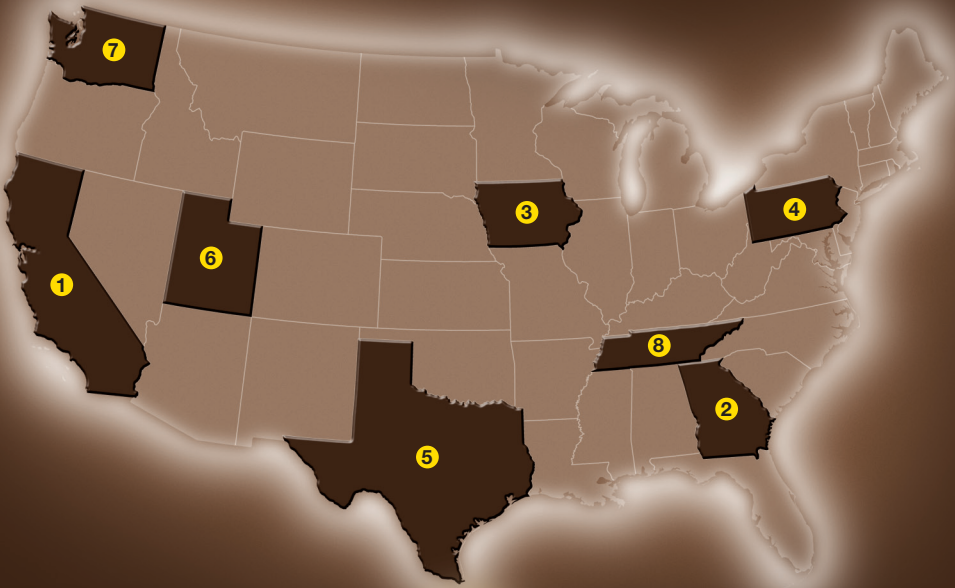
Office (801) 973-9442  
Fax (801) 973-9258

## ⑦ PASCO, WA

Office (509) 547-7272  
Fax (509) 547-0107

## ⑧ CELINA, TN

Office (931) 243-5544  
Fax (931) 243-5542



DURA PLASTIC PRODUCTS INC

NATIONAL ORDER DESK

1 (800) 854-2323

CALIFORNIA ORDER DESK

1 (800) 472-8564

DURA PLASTIC PRODUCTS, INC.

P.O. BOX 2097

Beaumont, CA 92223

800-854-2323

[www.duraplastics.com](http://www.duraplastics.com)