

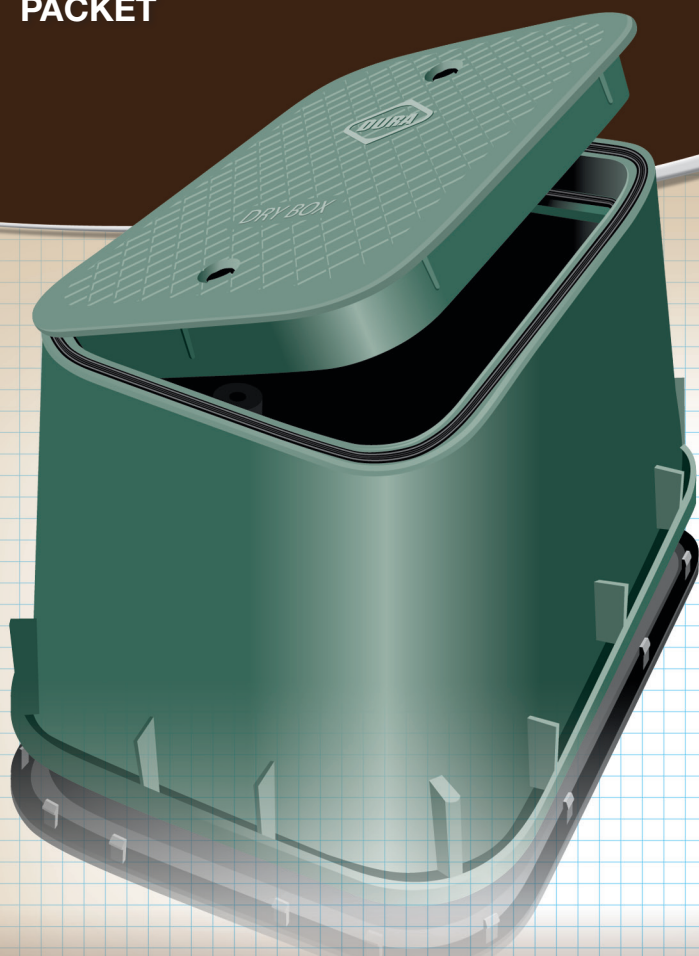
THE DRY BOX *by*



TM

DURA PLASTIC PRODUCTS INC

SPECIFICATION AND INFORMATION PACKET



800-854-2323

www.duraplastics.com



THE DRY BOX *by*



TO: All Landscape Architects, Designers, Distributors, Irrigation Contractors, Electrical Contractors, Municipalities, Government Agencies and Homeowners

RE: New Product Introduction

Dear Sir / Madam,

Once again, through discussions with many of you, and listening and understanding the needs our industry faces, Dura Plastics is proud to announce the **New, WORK SMART...WORK SAFE...DRY BOX**, a water resistant and insect resistant line of Valve Boxes.

Quickly becoming the new industry standard, these Double Face Sealed Valve Boxes prevent water, insects, snakes, rodents, and other unwanted pests from entering through unsecured lids and bolt holes. An optional base will keep out any burrowing rodents, insects, or amphibians, and an optional under lid accessory plate will keep any electronics organized, clean, and easily serviceable.

How It Works

As proven in the aerospace and automotive industries, Dura Plastics has incorporated a "Double" Face Seal into their new line of Dry Boxes. Molded grooves on both the outside circumference of the box and the inner circumference allows the proprietary molded seals to compress in two locations. The seal is achieved by two strategically placed bolt down locations allowing for the uniform compression of the seals as well as security. The lid, molded with its honeycomb design, adds additional strength and has several attributes molded directly into the surface assuring a simple, trouble free installation. An optional "Snap Tight" base may also be purchased. Using a series of unique opposing molded ridges, 16 "Snap Tight Tabs" and a rubber gasket will create a bottom seal to ensure no intrusion.

We have enclosed the following list of documents for your review:

1. A Written Architectural Specification
2. Detailed Dimensional Information
3. A copy of the standard Dry Box point of purchase marketing and packaging label that will be affixed to every box with detailed installation instructions printed on the reverse
4. A copy of the standard Dirt Skirt point of purchase marketing and packaging label that will be affixed to every box
5. Informational Advertisement you will begin to see in many upcoming industry magazines
6. Certificate of Compliance
7. Part Numbers and Descriptions
8. New Features

Please feel free to call us with any questions or comments.
It is what makes this industry move forward.

THE DRY BOX *by*



ARCHITECTURAL SPECIFICATION

Valve Boxes shall be constructed from High Density Polyethylene material. The Valve Box shall be water resistant incorporating a double face compression seal.

Valve Box Lid shall be designed and manufactured with two bolt down locations allowing uniform compression of proprietary molded seals. Valve Box Lid shall also be manufactured with honeycomb strength design. Bolts and bolt covers will be included with each box. The bolt covers shall be manufactured from HDPE and serve a dual purpose of keeping bolt area clean for ease of serviceability and also provide concealment from vandals.

Valve Box Lid shall have the ability to adapt an internal accessory plate and be able to accept various manufacturers electronics through its unique bolt pattern and design.

Valve Box Body shall include molded seal channels around the outside circumference and the inner circumference of the Valve Box. Valve Box shall also contain two recessed 3/8" nuts.

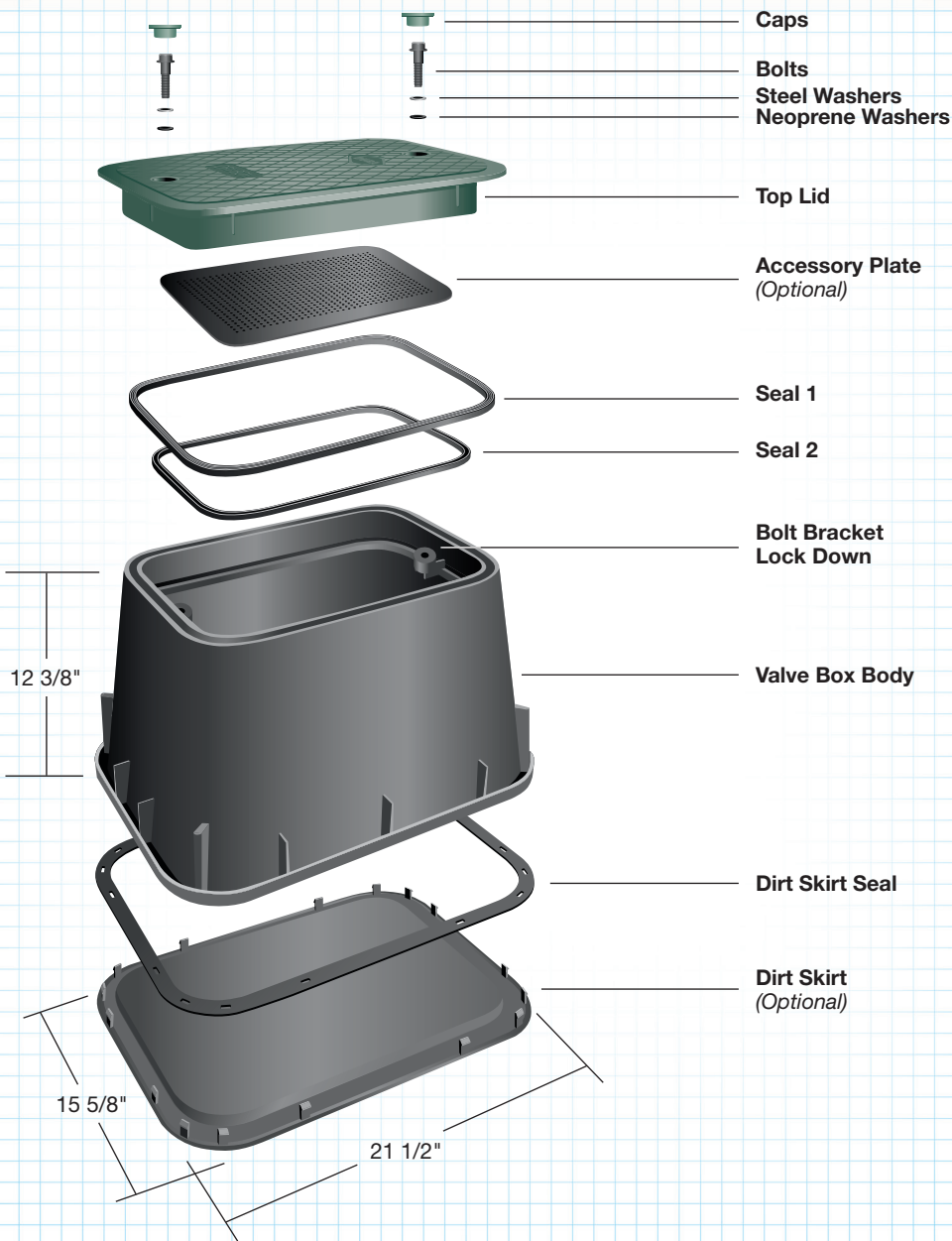
Valve Box Body shall have the ability to add a sealed bottom face, known as the "Dirt Skirt" to prevent water and burrowing rodents from entering. The bottom seal shall be achieved by the utilization of a series of opposing ridges molded directly into both the bottom circumference of the Valve Box Body and Dirt Skirt. The Dirt Skirt shall have 16 "Snap Tight Tabs" to ensure uniform pressure between Valve Box Body and the Dirt Skirt.

As Manufactured By:
Dura Plastic Products, Inc.
1520 Gainesboro Highway
Celina, TN 38551
931-243-5544

THE DRY BOX *by*



DETAILED DIMENSIONAL INFORMATION



THE DRY BOX by



POINT OF PURCHASE MARKETING AND PACKAGING LABEL

THE DRY BOX by



Compression Locks

Compression Sealing System



DURA

TM

DURA PLASTIC PRODUCTS INC

WATER RESISTANT





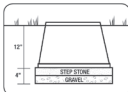

www.duraplastics.com

- Keeps Wires Dry
- Keeps Work Area Safe
- Keeps Work Area Clean
- Keeps Surface Water from Entering
- Professional Installation Instructions on Back (Remove Carefully)

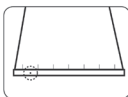
DRY BOX LABEL FRONT

Our Recommended Instructions for a Professional, Trouble Free Installation

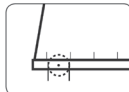
1. Choose desired location for installation.
2. Dig hole 4" deeper than Valve Box height.
3. Level bottom of the hole.
4. Place 2" of gravel at bottom of hole to help with any ground water (important in areas with clay soils).
5. Purchase large 18" x 18" concrete stepping stone from your local garden center.



6. Level stepping stone on gravel base to create clean work area.
7. Lay-out valve manifold / irrigation system on concrete stepping stone.
8. Assemble system by connecting valve supply and sprinkler zones.
9. Once assembly is complete, remove lid from box. Locate the bolt-cap in the center of the lid. Remove bolt cap gently with a screwdriver and loosen bolt. Lid can now be easily removed. Place Valve Box directly over valve manifold. With a marker, make a small mark on the side of the box to show incoming and outgoing pipes.
10. Remove Valve Box from hole. With a hole saw, drill between your marks. (Refer to hole saw chart for proper sizing). When drilling, place pilot drill from hole saw directly above the bottom lip of the valve box. This will leave approximately 1/2 of the hole saw not cutting through the box (see example). The desired shape is a "horseshoe", leaving an open-ended bottom.



11. The hole saw may leave a small radius at the open end of the hole. With a hack saw, cut a vertical line eliminating the radius making a true "horseshoe" shape with vertical sides (see example).
12. Once all water inlet and outlets have been drilled out of box, reset Valve Box over valve manifold to assure desired fit. If box does not sit firmly on stepping stone, review any areas that may be binding and cut / file any adjustments.
13. If system contains electric valves, make sure wires are pulled and secure before backfilling. A separate hole can be drilled in the side of the box for a "wire pull". Note: Select the size of the drill closest to the size of the outside diameter of the wire. This will insure a professional look and fit. (Caution: make sure wires are not pinched) (See valve instructions for proper wiring)
14. Once satisfied with installation, replace lid securely on the box.
15. Tighten center bolt to apply seal pressure. Then replace bolt cap. (Placing lid on box will help prevent dirt from entering valve area during backfilling)
16. Backfill soil to grade.



HOLE SAW SIZING CHART

1 1/2" Pipe	=	3/4" Hole Saw
3/4" Pipe	=	1" Hole Saw
1" Pipe	=	1 1/4" Hole Saw
1 1/4" Pipe	=	1 1/2" Hole Saw

REQUIRED TOOLS

1. Shovel
2. Tape Measure
3. Drill
4. Hole Saw Set
5. Drill Bit Set
6. Hack Saw
7. Gloves and Safety Glasses
8. Screwdriver
9. 3/4" Socket and Ratchet

Do It Once...Do It Right...Do It Dura

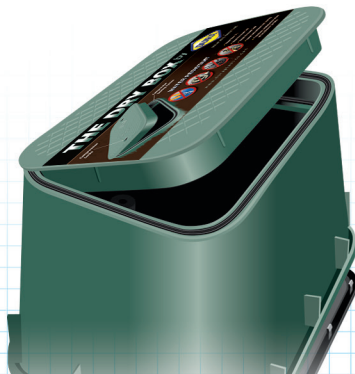
NATIONAL ORDER DESK
1-(800) 854-2323

CALIFORNIA ORDER DESK
1-(800) 472-8564

FACSIMILE TERMINAL
(951) 845-7644

P.O. BOX 2097
BEAUMONT, CA 92223

DRY BOX LABEL BACK INSTRUCTIONS



THE DRY BOX *by*



DIRT SKIRT ACCESSORY PACKAGING LABEL

DIRT SKIRT LABEL



THE DRY BOX *by*



INFORMATIONAL ADVERTISEMENT

COMPRESSION LOCKS

COMPRESSION SEALING SYSTEM

OPTIONAL ACCESSORY PLATE

OPTIONAL BOTTOM

WATER RESISTANT

Keeps Wires Dry	Keeps Work Area Safe	Keeps Work Area Clean	Keeps Surface Water from Entering
-----------------	----------------------	-----------------------	-----------------------------------

THE DRY BOX *by*

USA
Stamp Your Design with Peace of Mind

800-854-2323 • www.duraplastics.com

DURA PLASTIC PRODUCTS INC.

THE DRY BOX^{by}



CERTIFICATE OF COMPLIANCE VALVE BOX

To Whom It May Concern:

This is to certify that all Valve Box products have been manufactured utilizing materials formulated and tested to adhere to the properties shown below. We certify that where physical and/or chemical test requirements are part of the specification Dura Plastics has performed these tests to substantiate this certification.

Properties of Base Material	ASTM Test Method	HDPE
Tensile Strength	D-638	2,700 – 4,400 psi (Typical Range)
Flexural Modulus	D-790	Min 140,000 not to exceed 240,000 psi
Notched Izod Impact Strength	D-256	0.5 – 3.0 (Typical Range)
Deflection Temperature @ 66psi	D-648	150°- 200°F. (Typical Range)
Density	D-792	Min. 0.950 not to exceed 0.965
Electric Dielectric Strength	D-149	400 – 600 V/mil (Typical Range)
Molded Product		
Chemical Resistance	D-543	Very Resistant
Water Absorption	D-570	Less than 1% weight change

In addition, all Valve Box products carry a **Static Vertical Load Rating** of SCTE (Light Duty, Pedestrian) and have been tested in accordance with the requirements of the Fabricated Access Covers Trade Association (FACTA) Specification for fabricated Access Covers, Version 4.0/2001, sections 7.4 and 7.5.

Our Valve Boxes are proudly made in the USA.

QUALITY BY DESIGN

THE DRY BOX *by*



PART NUMBERS AND DESCRIPTIONS

DRY BOX

Part Number	Dimension	Color
120-DB-2	12"W X 17"L X 12"H	Black Body Green Lid
121-DB-2	12"W X 17"L X 12"H	Green Body Green Lid
122-DB-2	12"W X 17"L X 12"H	Tan Body Tan Lid
123-DB-2	12"W X 17"L X 12"H	Purple Body Purple Lid
124-DB-2	12"W X 17"L X 12"H	Black Body Black Lid
125-DB-2	12"W X 17"L X 12"H	Grey Body Grey Lid

DIRT SKIRT

Part Number	Dimension	Color
12DS	15.75"W X 21.75"L	Black

See Our **IMPACT Video** at
www.duraplastics.com

THE DRY BOX *by*



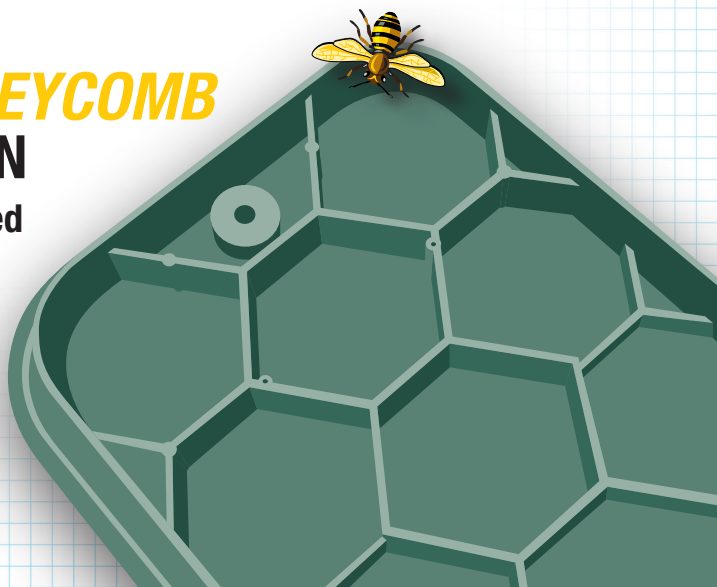
NEW FEATURES

Innovative
DOUBLE SEAL
Design



NEW ***HONEYCOMB***
LID DESIGN

Strength inspired
by Nature



DURA WAREHOUSES

① CORPORATE

Office (951) 845-3161
Fax (951) 845-7644

③ BURLINGTON, IA

Office (319) 758-9060
Fax (319) 758-9058

⑥ SALT LAKE CITY, UT

Office (801) 973-9442
Fax (801) 973-9258

② PERRY, GA

Office (478) 988-0282
Fax (478) 987-7003

④ FRACKVILLE, PA

Office (570) 874-4651
Fax (570) 874-4652

⑦ PASCO, WA

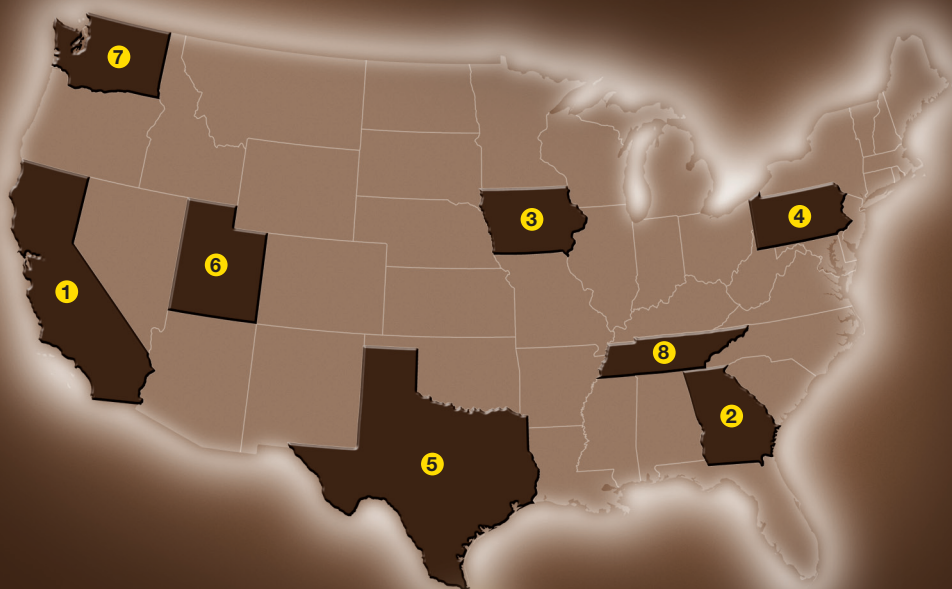
Office (509) 547-7272
Fax (509) 547-0107

⑤ CARROLLTON, TX

Office (972) 406-8996
Fax (972) 406-0306

⑧ CELINA, TN

Office (931) 243-5544
Fax (931) 243-5542



TM

DURA PLASTIC PRODUCTS INC

NATIONAL ORDER DESK

1 (800) 854-2323

CALIFORNIA ORDER DESK

1 (800) 472-8564

DURA PLASTIC PRODUCTS, INC.

P.O. BOX 2097
Beaumont, CA 92223

800•854•2323

www.duraplastics.com